



o v e s c o  
innovation in scope



## OTSC<sup>®</sup> system ..... *good to have*

Over-The-Scope-Clipping system for flexible endoscopy



The all new OTSC® system stands for superior efficacy in flexible endoscopy for

- Acute bleeding
- Full thickness wall closure
- Compression as well as approximation of tissue
- Management of complications after endoscopic or surgical interventions

## ..... OTSC® Over-The-Scope-Clipping system for flexible endoscopy

The OTSC® system is a new class of clipping systems to be applied via flexible endoscopes. It offers you three unique features superior to any other device:

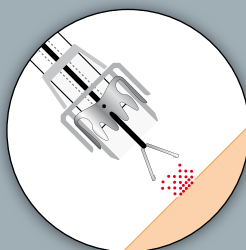
- Larger volume of tissue secured
- Higher stability at the lesion
- Minimal strain of surrounding tissue

The exceptional features and therapeutic functions of the system are based on its unique material and design: the superelastic Nitinol is biocompatible and, if needed, even suited to be applied as a longterm implant.

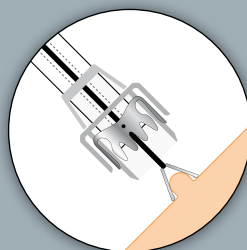
The use of the OTSC® system is intuitive and easy, very similar to other devices based on the application cap principle. It is compatible with

## ..... Application

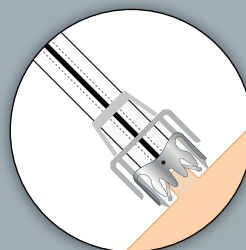
### Haemostasis



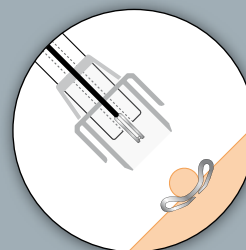
Targeting the lesion  
(if needed with  
OTSC® application aid)...



... approximation of the  
application cap  
and the target tissue ...

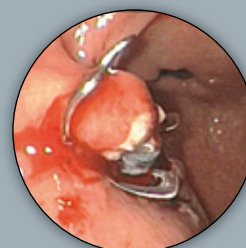


... release of the clip with  
hand wheel ...



done.

### Example: Stopping a haemorrhage after polypectomy



Further examples: Peptic ulcer bleeding



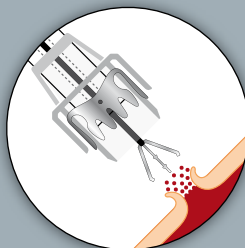
all commercially available endoscopes. A variety of different sizes and types are available.

All OTSC® products are for single patient use.

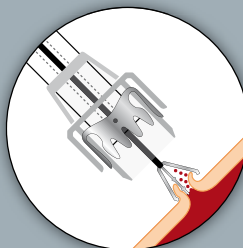
In addition, for a precise and easy closure of even larger lesions several application aids are available: the OTSC® Anchor and the OTSC® Twin Grasper® help you to approximate and fix tissues like perforations, fistulae etc.



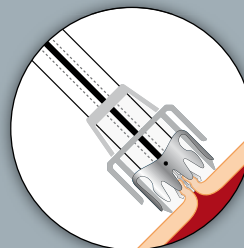
## Wall closure



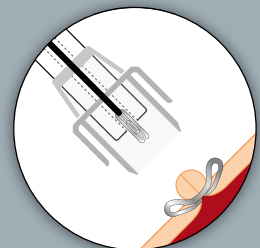
Targeting the lesion  
(if needed with  
OTSC® application aid)...



... approximation of the  
application cap  
and the target tissue ...

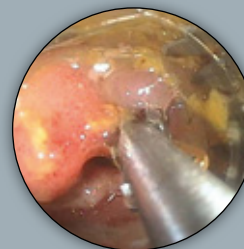
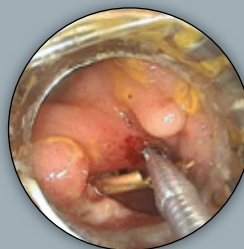
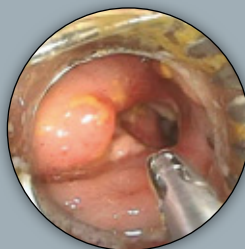


... release of the clip with  
hand wheel ...



... done.

## Example: Fistula closure in the colon



Further examples: Perforations, anastomotic leaks, other postoperative complications

## Additional indications

Endoscopic marking, closure of GI-tract organs in NOTES procedures

# OTSC® products

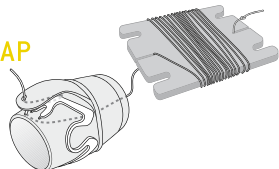
## Details and components



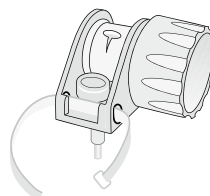
## OTSC® system

It consists of an applicator cap with a mounted clip, thread, and handwheel for clip release.

### OTSC® APPLICATOR CAP



### OTSC® HAND WHEEL



The applicator cap is mounted onto the tip of the endoscope. The clip is released by tightening the thread with the hand wheel. The system is very flexible and will thus allow for multiple indications and all conventional equipment in endoscopy. The various clips and caps can be classified as follows:

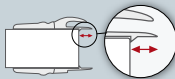












Features and sizes of the application caps:

- Three different **sizes** of caps suitable for almost all commercially available endoscopes (11, 12, 14)
- Two **different depths** of caps for grasping more or less tissue during approximation (3 or 6 mm)

Features of the clips:

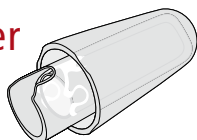
- Three different **sizes** adapted to the cap sizes (11, 12, 14)
- Three different **shapes of teeth** suitable for different indications and tissues (a, t, gc)

Version of OTSC:  type a  type t  type gc

Endoscope size 		Ø 9.5 – 11 mm	Ø 10.5 – 12 mm	Ø 11 – 14 mm
Depth of cap 	3 mm	 	 	 
	6 mm	 	  	 

## OTSC® reloader

### OTSC® RELOADER

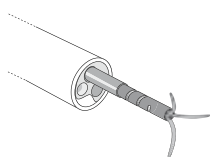


The reloader is used to reload a second clip onto an already mounted OTSC® system if needed in the same treatment session. The reloader is available in all sizes with all clip types as well. The reloader is not included in the OTSC® system set and has to be ordered separately.

## OTSC® application aids

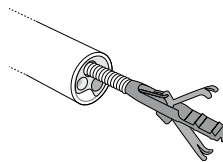
Two instruments are available that facilitate the use of the OTSC® system

### OTSC® ANCHOR



For better approximation of tissue especially when indurated (e.g. fistulae, chronic ulcer).

### OTSC® TWIN GRASPER®



For easy approximation of gaping edges of a lesion.

Ovesco Endoscopy AG  
Dorfackerstr. 26  
72074 Tübingen/Germany

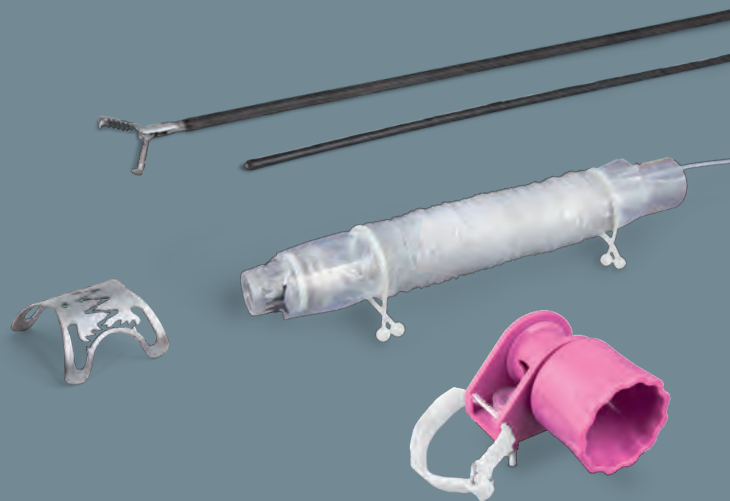
Phone +49 (0) 7071.98979-160  
Fax +49 (0) 7071.98979-260  
service@ovesco.com

**dr Piktel**  
Medic@l Systems  
Czackiego 2/2  
15-268 Białystok  
Tel. +48 85 74 47 770  
Fax +48 85 74 47 213  
www.drpiktel.com

[WWW.OVESCO.COM](http://WWW.OVESCO.COM)

**Ovesco Endoscopy AG** is a medical device company specialising in the fields of flexible endoscopy and endoluminal surgery. Ovesco develops, manufactures, and markets innovative products for the treatment of gastrointestinal disease. Ovesco products stand for therapeutic efficacy and efficient application.





## FTRD<sup>®</sup> System.....

Full-Thickness Resection Device for flexible endoscopy



## The novel FTRD® System for endoscopic Full-Thickness Resection (eFTR) of lesions in the colon and rectum.

- Fast transluminal minimally invasive technique
- Proven OTSC® technology for safe tissue closure
- Minimal thermal injury
- Valid histologic evaluation of one en-bloc specimen according to residual tumor (R) classification
- Complete instrument set for endoscopic full-thickness resection procedures

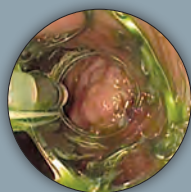
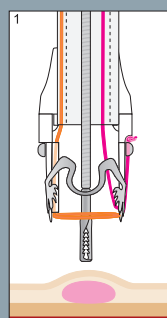
### FTRD® System Set

#### Full-Thickness Resection Device for flexible endoscopy

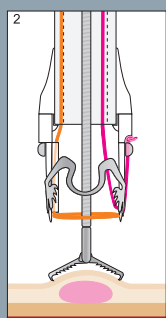
The FTRD System Set is a novel tool for diagnostic and therapeutic full-thickness resection via the flexible endoscope in the colon and rectum. The technology is based on the well-established OTSC System, enabling the endoscopist to resect all layers of suitable lesions including the serosa. The design of the FTRD System ensures that the transection of the tissue happens only after the defect has been closed completely. At no time will abdominal cavity and bowel lumen be in contact.

## Procedure

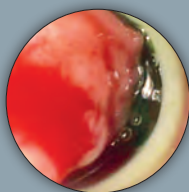
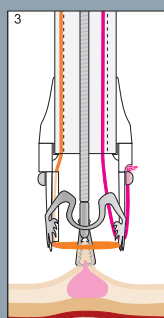
### Stepwise eFTR of a recurrent sessile adenoma (non-lifting sign) in the descending colon.\*



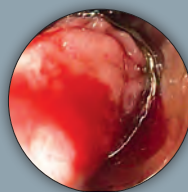
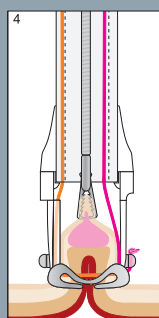
1. Marking of the lesion before mounting the FTRD System



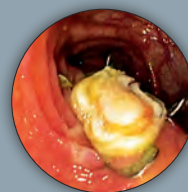
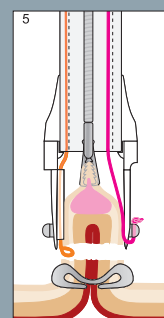
2. Grasping of the target tissue with the FTRD Grasper



3. Retrieval of the target tissue within cap and fixation



4. Double check whether target tissue is completely within the FTRD Cap – Release of clip with hand wheel



5. Closure of snare and electrical cut of target tissue. Retrieval of the resected sample. Check of the resection site

FTRD®  
GRASPER



FTRD®  
MARKING PROBE



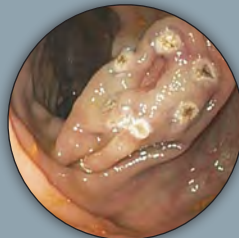
FTRD®  
SYSTEM



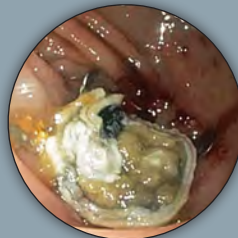
## Example 2: De novo resection after incomplete polypectomy in the descending colon (early carcinoma)\*



Status after incomplete polypectomy in the descending colon (early carcinoma)



Tissue marked with electrical probe

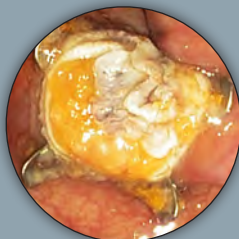


Resection site after FTRD procedure (tissue previously marked with Indian ink)

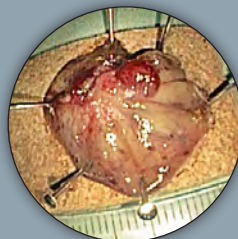
## Example 3: Resection of a relapsed adenoma (HGIEN) in the descending colon (non-lifting sign)\*



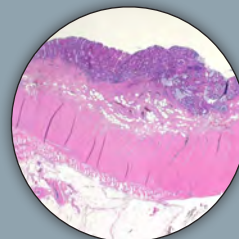
Relapsed adenoma in the descending colon, non-lifting sign



FTRD resection site: all layers of the bowel wall to be identified in cross section



Full-thickness sample, ca. 2.5 cm



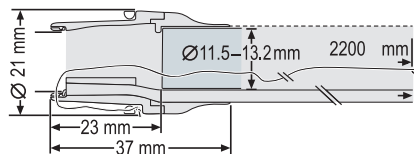
Histology: completely resected recurrent adenoma, HGIEN

# ..... FTRD® System Set consisting of:

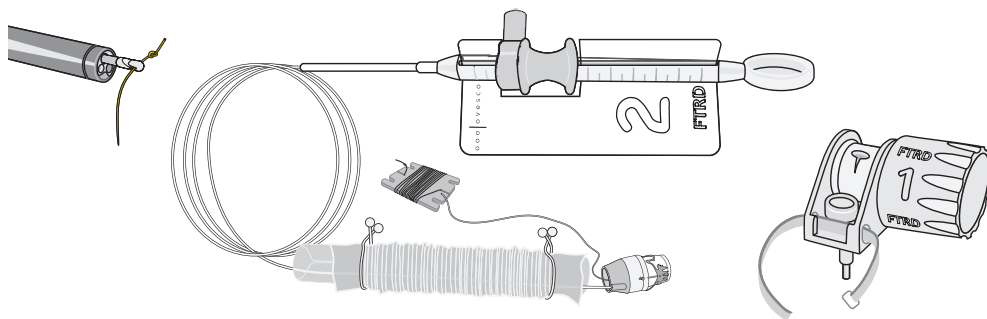
(Reference number 200.70)

## Details and components

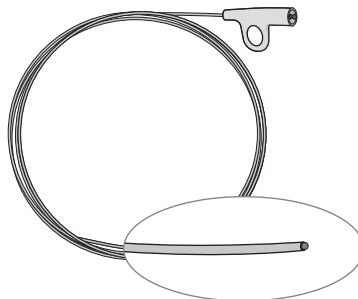
Key dimensions of the FTRD applicator cap:



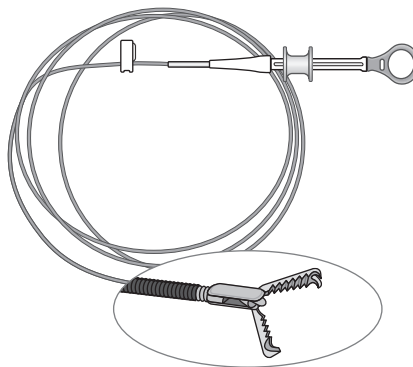
The FTRD System consists of the FTRD applicator cap coming with a ready-to-use mounted FTRD clip and a fitted HF snare at its tip. Included are the hand wheel, thread retriever for easy retrieval of the release thread, and the endoscope sleeve. The applicator cap is being mounted on the endoscope with the snare running on the outside of the scope, the sleeve preventing entrapment of any tissue between scope and snare. By turning the wheel the clip will be released through the thread and a new release ring. The target tissue will be firmly immobilized and subsequently cut by the closed snare. The FTRD System is only available in one size, for endoscopes with a diameter of 11.5 – 13.2 mm.



HF coagulation probe for marking of the target lesion in preparation of FTRD use. Marking the lesion will facilitate both detection and complete resection of the right tissue.  
Flexible shaft



Grasping forceps for proper grip on the target tissue and precise retrieval of the sample into the applicator cap.  
Flexible shaft



**Ovesco Endoscopy AG**  
Dorfackerstr. 26  
72074 Tuebingen/Germany

Phone +49 (0) 7071.96528-160  
Fax +49 (0) 7071.96528-260  
service@ovesco.com

**Ovesco Endoscopy USA Inc.**  
455 Los Gatos Blvd.  
Suite 101  
Los Gatos, CA 95032  
USA

Phone +1 408 884 8976  
Fax +1 408 608 2077  
customerservice@ovesco-usa.com

**Ovesco Endoscopy AG** is a medical device company specializing in the fields of flexible endoscopy and endoluminal surgery. Ovesco develops, manufactures, and markets innovative products for the treatment of gastrointestinal disease. Ovesco products stand for therapeutic efficacy and efficient application.

[www.ovesco.com](http://www.ovesco.com)