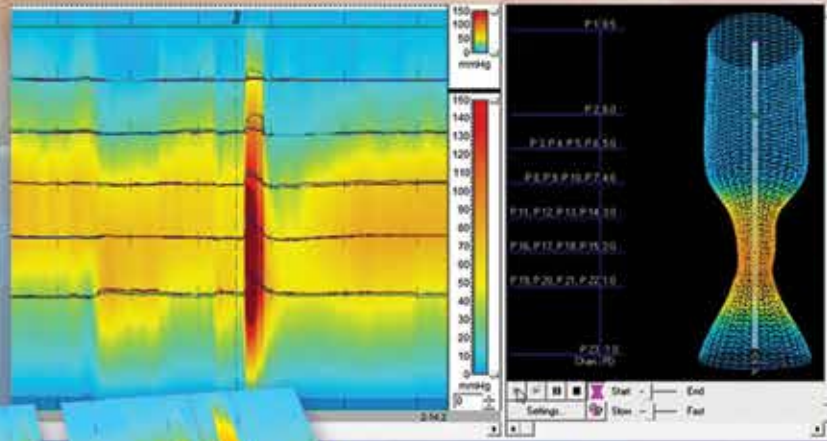


The Sandhill **Pelvic Floor** Evaluation and Retraining System

We understand that choosing the right products should not be the most difficult part of the decision, but more often than not, it is. That is why we have developed a very comprehensive product portfolio for Pelvic Floor Evaluation and Retraining, including Anorectal Manometry, EMG Evaluations, and Pudendal Nerve Latency Testing.

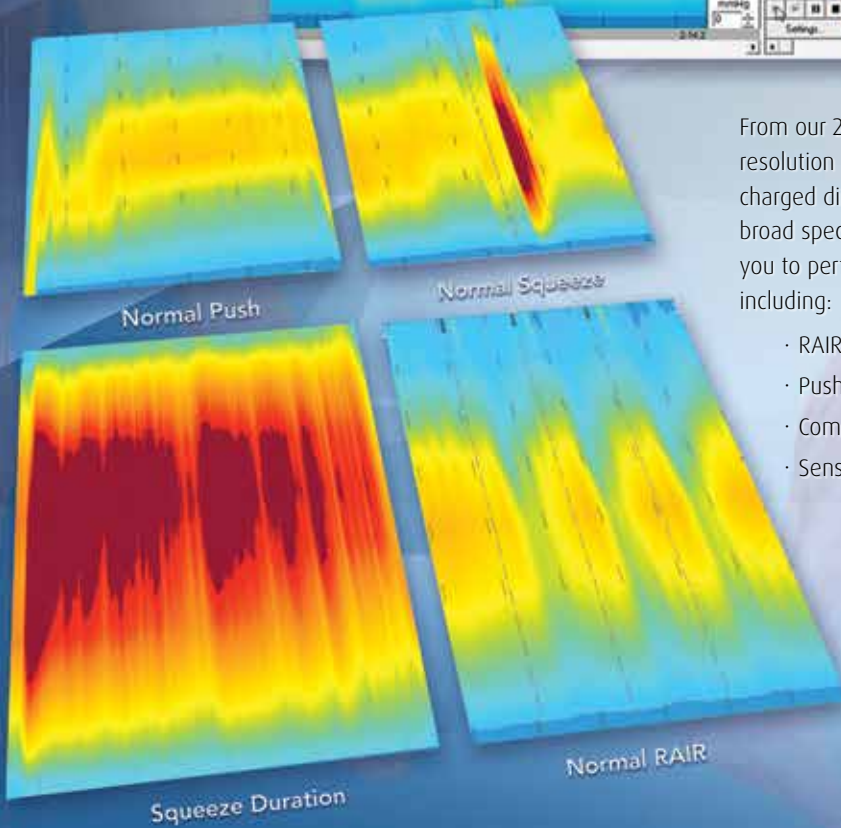
From Sandhill Scientific's adaptive INSIGHT System and choice of diagnostic modules to BioVIEW® Acquisition and Analysis Software, finding a package that meets your needs has never been easier.

Anorectal Manometry



From our 23-channel, multi-directional, high-resolution probe to a simple 4-channel, air charged disposable design, Sandhill offers a broad spectrum of available options allowing you to perform a full range of diagnostic tests, including:

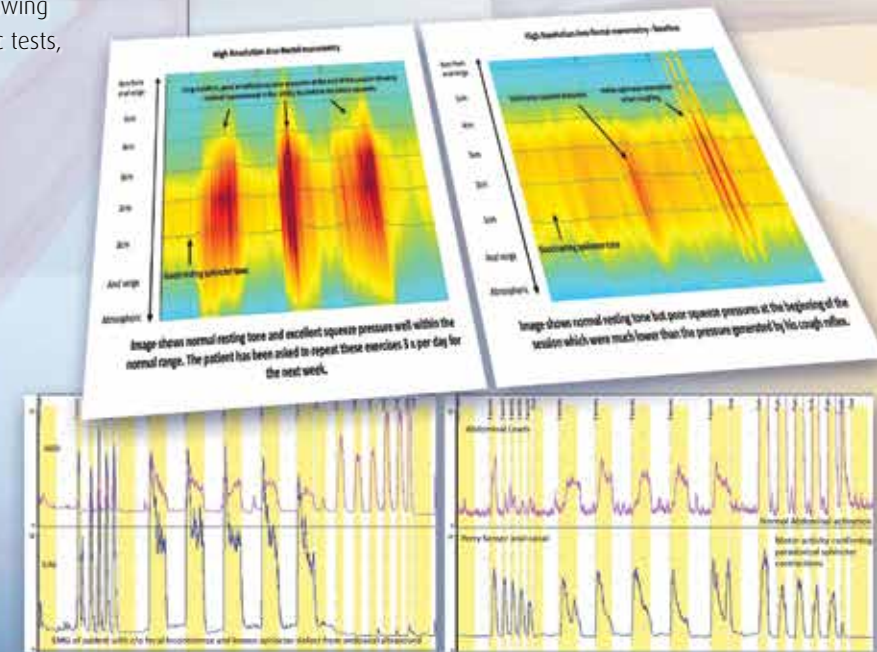
- RAIR
- Push and Squeeze Maneuvers
- Compliance Testing
- Sensation



Pelvic Floor Retraining

Functional disorders of the pelvic floor such as fecal incontinence and chronic constipation are disabling conditions which are increasing in prevalence. Most often the cause of these problems can be identified with a thorough physiological evaluation, which includes Anorectal manometry, rectal sensation and compliance, pelvic floor EMG studies and Intra-rectal defecation studies. Once properly identified, these abnormalities can be treated.

One very useful tool is retraining the patient using various types of Biofeedback. The most important issue is having both the proper equipment and software to perform the task correctly. Sandhill Scientific has developed our equipment to allow for accurate, user friendly procedures for both patient and clinician.





Our 23 channel multi-directional high-resolution probe allows visualization of the entire length and dynamics of the anal canal thereby increasing patient tolerance, saving time by eliminating a station pull-through... and using our BioVIEW® Software with guided acquisition protocols and color pressure mapping has truly simplified the complexities of analysis and interpretation.



Sandhill University - training and education at a higher level

Providing great products is just the first step in a long term relationship with our customers..... we believe that training and education are the key components to even the best equipment, enabling you to provide outstanding patient care. That's why at Sandhill University, we have developed a comprehensive set of options to meet your needs, including:

Sandhill University/Denver - Sandhill University/Online - Webinars - SuperVISION MD - Cybercoaching

Sandhill Scientific, Inc
9150 Commerce Center Circle, #500
Highlands Ranch, CO 80129 USA
800.468.4556 303.470.7020
Fax: 303.470.2975

SANDHILL
scientific

www.sandhillsci.com